

home design ideas

the latest and the finest in home decor and design ideas

Making your apartment a home

FEATURED PROJECTS

- Bel-Air
貝沙灣
- Celestial Heights
半山壹號富甲半山
- Dynasty Court
帝景園
- Hong Kong Parkview
陽明山莊
- Ridge Court
冠園
- The Waterfront
漾日居
- Botanic Terrace
芝蘭台
- Central Park
帝柏海灣
- Estoril Court
愛都大廈
- Hong Villa
峰景
- Shiu Fai Terrace
肇輝臺
- Tregunter Tower
地利根德閣
- Braemar Hill Mansions
賽西湖大湖
- Classical Garden
新峰花園
- Evergreen Villa
松柏新村
- Illumination Terrace
光明臺
- South Bay Tower
南灣大廈
- 72 Wing On Lodge
永安新村72號
- Broadview Terrace
雅景臺
- Clovelly Court
嘉富麗苑
- Fontana Garden
豪園
- Palm Springs
加州花園
- The Leighton Hill
禮頓山

APARTMENTS DESIGNERS



Company Profile

Else Design

Founded in 2008, Else Design is a Hong Kong based design practice offering master planning, architectural and interior design services with its main focus in the region of China and South East Asia. Our work combines possibilities and choices with design character, resulting in distinctive, high-quality buildings and spaces that provide community with creative living solutions. With a group of new generation professionals and designers working in an interactive studio, we cultivate designs for our clients with innovation and forefront perspective.

艾索設計於2008年在香港成立，提供專業的建築、規劃及室內設計服務。業務專注於中國、香港及東南亞地區。我們的設計作品強調可能性及可選性，融合設計風格及語言，創造富有特質的建築與空間，為當代社會提供具創意的生活環境。本公司設計的團隊以新一代的專業設計師為主骨幹。工作文化強調互動，探索及概念衝擊。



中 • 歐時尚設計

A Modern European Style with Oriental Touch

The spacious quality was presented as a unifying whole in this unit with the coexisting European tone and proportion. What a perfect home for an European gentleman in the Asia Pacific. Walking into the unit, you immediately submerge yourself into European culture presenting in a modern passionate look.

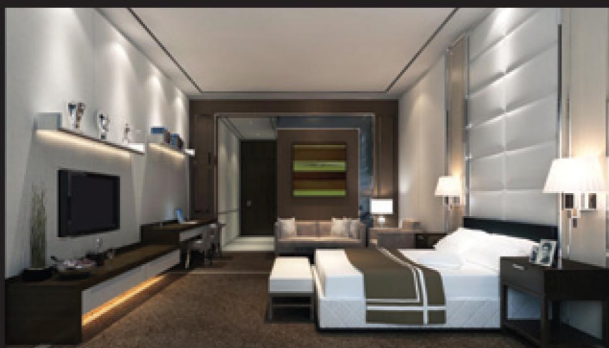
Subtle yet energetic, the traditional European proportion working with modern materials, generating a stylish living space with lots of passion. Framed mirrors and wall paneling form the main design languages with a clearly-defined yet interacting floor plan. The design is presenting a perfect marriage of formalities and flexibilities, a traditional feel with modern way of life and oriental touch.

Green toned paintings and modern oriental furniture were carefully selected as the visual and cultural stimulator respectively to the interior, this resulting in a familiar yet exotic style in harmony.

整體的設計以匯聚歐洲色彩與東方文化為主，著重於視覺延伸及和諧風格的相互關係。這些元素都是身處亞洲的歐洲人所嚮往的。甫進室內，仿如置身於時尚感與歐洲格調一體化的空間。

傳統的歐洲格局配合時尚的素材，營造出熱情及別具型格的生活空間。鏡框及壁板成為了演繹設計重點的主角，同時也成為劃分並連繫空間的要素。設計所呈現的是一段正規而具備彈性的完美婚姻，時尚的生活方式跟東方格調融會，散發出傳統的氣息。

精挑細選的綠色畫作，拼湊時尚的東方家具，刺激了人們的視覺感觀及文化思維，同時洋溢出濃厚的異國風情。



- 帝景園
Dynasty Court
- 1,962 平方尺/sq.ft.



意日融和之簡約設計

Simplicity of Italian + Japanese

The couple owns this 1,400 sft harbor-view unit are Italian + Japanese. Simplicity and a touch of both Italian and Japanese culture form the design theme of this particular project. The skillful manipulation of Italian marble backdrop and white oak flooring charmingly creating a unifying living space with the subtle touch of Japanese veneer and proportion.

The solid wall subdividing the kitchen was replaced by sliding glass partitions aiming to enhance spaciousness of the flat. With the dedicated selection of loss furniture, a cozy home was presented with a sense of natural softness.

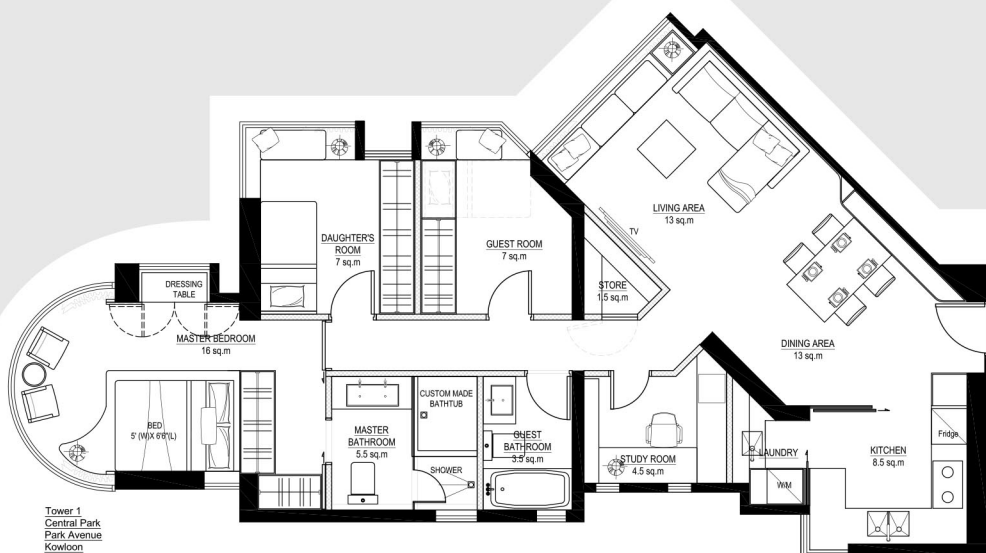
The master bedroom was designed in Japanese Tatami concept, with the low platform extending to the curved window, the magnificent harbor view was merged to the interior space to a great extend. A stylish minimal bathroom is manifesting a simple yet detail orientated way of life of the young couple.

面積1,400平方尺的單位的業主是一對意藉和日藉的夫婦，因此設計主題也相應地揉合了意大利和日本的文化特色，展示不同國度的簡約態度。客廳的電視背景牆以意大利的大理石鋪陳，配襯白橡木的地板，低調地流露和式的樸素生活氣息。

運用玻璃趟門劃分廚房，從而提升室內的空間感。淺淡的卡其色家具，跟裝飾元素融為一體，使人感覺自然舒暢。主人房的設計則以層階式地台配合日式榻榻米，而地台跟弧形的落地窗戶相反而建，視覺上猶如把室內空間延伸至外，盡覽迷人的海港景色。時尚的浴室設計反映著年青夫妻追求簡單而著重細節的生活方式。



- 帝柏海灣
Central Park
- 1,400 平方尺/sq.ft.



Else design

Else Design 艾索設計

Tel : +852 3160 8583

Fax : +852 3160 8577

Address : Unit 19B, EGL Tower, No. 83
Hung To Road, Kwun Tong,
Kowloon, Hong Kong

地址 : 九龍觀塘鴻圖道83號
東瀛遊廣場19樓B室